

Bonsai Notebook

www.austinbonsaisociety.com

A Publication of the Austin Bonsai Society

December 2012 vol 24

December 2012 Programs

by Bill Boytim

Wednesday December 12th will be our annual Christmas Dinner at Zilker. We can begin setup at 6:30 and plan to eat at 7:30. Alisan Clark is coordinating side dishes and she can be reached at 327 3168 if you have a question about what to bring or what you have signed up to bring. Ham and turkey will be provided by Austin Bonsai Society and everyone is asked to bring a covered dish to provide the non meat part of the meal.

You are also invited to bring a decorated Bonsai Tree to add a festive touch to the tables. In the past there have been many uniquely decorated trees.

A new year will be here before we know it. Please think about what programs you would like to have in 2013 and write down any of your thoughts and suggested speakers and pass them on to the board.

There will not be a workshop in December.

Calendar of Events

December 12th ABS Monthly Meeting Reception

Hosts: Attendees

Zilker Garden Center 7:00 pm

December 12th ABS Monthly Meeting

Christmas Dinner

Zilker Garden Center 7: 00 - 9:00 pm

December ABS Board Meeting

Not Scheduled this month

Zilker Garden Center 7:00 - 7:30 pm

December ABS Member's Workshop

No Workshop

this month at

Zilker Garden Center 7:30 - 9:00 pm



**Diaza for Suiseki viewing stones
with Jim Trahan**

November 2012 ABS Meeting

(Photo by Joey McCoy)

Austin Bonsai Society Board of Directors

Mike Watson
President

Bill Boytim
Vice President

Nan Jenkins
Secretary

Pat Ware
Treasurer

Ken Lakin
Member at-Large

Vacant
Member at-Large

John Muller
Member at-Large

Joey McCoy
Former President

The rate of advertising in "Bonsai Notebook" is \$6.00 per month or \$35.00 per year, for two column inches minimum. Additional space must be purchased in increments of two column inches. Two column inches measure approximately 3 1/2 inches wide by 2 inches high. All ads must be camera ready and prepaid. Changes to ads must be received 30 days prior to the month of the desired insertions. Other newsletter content is due on the last day of the month, in order to be published in the next month's newsletter.

John Muller is the editor of "Bonsai Notebook". He may be contacted at jcm2austx@sprintmail.com.

Austin Bonsai on the Internet

Online discussions
Picture and video sharing
Questions and answers
Upcoming events
NO SPAM

<http://groups.yahoo.com/group/austinbonsai/>
or
jvmccoy@sbcglobal.net.

President's Message by Mike Watson

This year has flown by for me, how about you? Actually, the last two years have gone by quickly. It seems like just yesterday I accepted the job as president of the club. Now my term is up and I just wanted to tell you all that it has been an honor and a privilege to serve the club in that capacity. I highly recommend for new club members to become board members. It's a lot of fun to be behind the scenes and see how this club works. It's also very gratifying to help put on our usual events, put together the monthly meetings and workshops, and bring in the visiting artists. Bonsai is not only about maintaining and improving our trees, it's also about maintaining and improving our club too!

The 2013 convention is getting closer than you think. Don't forget to bring Becky those raffle items and empty coffee cans at the next meeting!



(Photo by Joey McCoy)

AUSTIN BONSAI SOCIETY GENERAL MEETING

November 14, 2012
Zilker Garden Club House

The Call to Order was at 7:34 by President Mike Watson.

Deb VanCleaf introduced the visitors: Brad and Dese Hull and Angie Hewes.

Mike thanked Russell Kohlert and Valerie Morris for their delicious refreshments.

Mike **announced** that the ABS board needs three new members for the 2013-2014 years. If anyone would like to volunteer for this opportunity to learn more about the way things happen in the club, please see Mike.

Pat Ware, **Treasurer**, presented the proposed budget for 2013, which was accepted by the membership without change after Bill Boytim moved and Connie King seconded the motion.

Pat also **announced** that she has Austin Bonsai Society pins available for sale for \$4.00 each.

Pat also **announced** that the sheets to sign up for dishes for the Christmas party at the December regular meeting are going around the room as well as the sign up sheet for the 2013 host/hostess for each meeting. The Christmas party will be on December 12th. We can arrive at 6:30 for appetizers with the meal beginning at 7:00. Table decorations will be the bonsai trees that we bring. So decorate your tree as you wish and let's have a festive good time!

continued... pg7 (General Minutes)

MBP Bonsai Studio

Importers, Retail & Wholesale
Your source for:

High quality Yagimitsu & Ryukoh tools
Organic Bonsai Fertilizers
Imported and Domestic Trees
Bonsai Pottery, Soils and supplies
Classes & Seminars
Open Tuesday Through Sunday



ph: 512-989-5831
e-mail: mbpbonsai@suddenlink.net
601 Kay Lane
Pflugerville, TX 78660
(call for directions)

LSBF (Lone Star Bonsai Federation), of which all members of the Austin Bonsai Society are members, has a website which might help members understand the organization better.

Please go to: <http://www.bonsai-lsbf.com>

JADE GARDENS

HOME OF



Chuck & Pat Ware
Owners
Visa & MasterCard

12404 Ranch Road 12
Wimberley, TX 78676
(512) 847-2514

e-mail: bonsaijg@gmail.com
web page: <http://www.bonsaiexhibittexas.com>

Bonsai Calendar

- SSOT meeting schedule for 2013: Feb. 16 Flat Root/Root over Rock; Mar. 23 Convention Display, DYOT; June 1 Logstrum Workshop or Tropical with Stone; Sept. 28 Annual business meeting and panel critique.
- The 2013 state LSBF convention will be April 11-13, 2013, at the New Braunfels Convention Center.

Know of an upcoming Bonsai event of interest to club members? Send the details to jcm2austx@sprintmail.com

Filling workshops for the convention, we've tried to put the main focus on native species, those that folks think of, when they think of Texas. One particular vine species stands out more than others. Mustang Grape (*Vitis mustangensis*) is a native Texas vine that can take high heat and sun and is hardy throughout the state. It's leaves have scalloped lobes with a white fuzzy underside, a unique ornamental feature. They also will turn a warm yellow color for fall. While the leaves are naturally large, they reduce very well in Bonsai culture. The grapes are blue-purple held in small clusters, just right for Bonsai-scale. Found in nature, the fruit makes excellent jelly and wine! The bark is naturally thick and shaggy. The old Mustang Grapes for the workshop were collected by members of the San Antonio and Austin Bonsai societies specifically for the convention. Trunks range from 4-6" and are all different with lots of character. You'll find twists, bends, knots and hollows. Some could benefit from carving, so think about appropriate tools to bring for this workshop.

Joey McCoy, Convention Chair



November ABS Workshop

Basic Tool Safety and use of Power Tools used in various Bonsai Projects



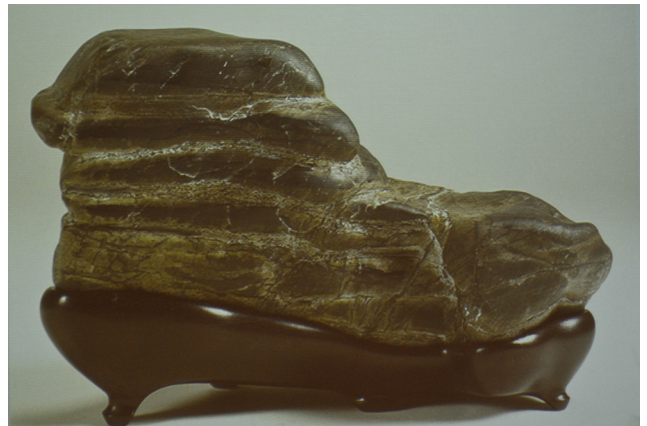
(Photo by Terry Ward)

November 2012 ABS General Meeting - Daiza for Suiseki viewing stones



What You Will Need

- General Tools
- Kit for Roughing-Out
- Kit for Final Sanding
- Kit for Finishing



(Photos by Joey McCoy)

December Bonsai

by John Miller

Editor's Note: John Miller, who writes a monthly column for the Bonsai Society of Dallas and the Fort Worth Bonsai Society, has agreed to share his column with us. We need to make adjustments for our warmer, climate, with its early springs, long summers, late falls and erratic winters.

Why don't you give bonsai a present this year. The Texas State Bonsai Exhibit is progressing but could go a lot faster with more donations. Send a check to The Texas State Bonsai Exhibit, Inc/13450 N. Highway 183m Suite #116/ Austin, TX 78750-3227. Find full details on the web www.ttsbe.org .

Usually not too much has to be done right now. That is if you prepared last month and you have no tropicals inside to care for. The big thing is to know what temperatures your trees can withstand and to remember that water is very important in the winter time. If you did not get your pines and junipers taken care of last month, do it quickly.

Since the trees are not using as much water during dormancy it is easy to overlook checking on them. The low humidity usually found during winter helps dry the soil. Winter sun can be pretty hot and if it shines directly on the pot it will hasten the drying process. Winter will usually also be more windy. Therefore, however you bed down the trees, you need to check the dryness often. The same trees that needed more water last summer will also need to be checked more often during the winter. I think that more trees are lost during the winter to having the soil dry out than from the actual cold.

Deciduous trees should not be placed where they receive winter sun. After a period of dormancy, the heating of the tree could possibly cause it to break dormancy prematurely. If that happened you would need to keep it above freezing the rest of the winter. After they go dormant they have no need for any sunshine.

Evergreen types especially and deciduous to a lesser extend should not have the root ball subjected to alternate freezing and thawing. That process tends

to tear and damage the roots. Placing the trees on the ground and using a mulch will minimize this problem

Plants have different degrees of hardiness for their top growth and their roots. The reason being that the ground acts a large reservoir of heat and here in Texas seldom freezes more than an inch or two down. Therefore, plants like the pomegranate and crepe myrtle which is at the northern extent of their range outside will only be hardy to 32 degrees in pots. Any plant that you are unsure of should be protected from freezing. This can be a problem because if they are not kept cool after they go dormant they will break dormancy and start to grow too soon. Growing without sufficient light cause long spindly growth which you cannot control. My best solution for this when I lived in town was to have a long platform with two wheels that I pulled into the garage on nights where freezing was forecast and kept outside at all other times.

The cold weather will keep any insect problems under control outside. You should use a dormant oil spray to kill over-wintering insets and eggs. A dilute spray of lime-sulfur can be used on deciduous trees if they have no green at all which will also control fungal spores but be sure to follow label directions carefully. You should watch for damage from rodent types, rabbits, squirrel, and rats. They will seriously prune branches and strip bark in short order..

Bonsai in greenhouses or indoor bonsai will need to be watched for the normal indoor problems. Low humidity, spider mites and scales are the biggest problems here. Trying to keep the humidity up by placing you trees on a humidity tray can possibly give you some soil problems, root rot or some other fungal disease. I use the same controls in the greenhouse that I use outside all year.

You can take advantage of the winter slowdown by spending your time getting pots ready for spring, clean and sharpen your tools, study what changes you would like to make on your trees and so forth. Making notes about what needs to be done on an individual tree is great but if you are like me the

continued... pg6

notes and trees are usually a long way apart. If you place a colored stake or ribbon on the tree you will see instantly which one needs what done. For example, I am using red for needs repotting, purple-needs a new pot, yellow-serious pruning, orange-should be restyled, etc. These can be put on during the year if you make that kind of decision as you are doing general routine work.

Be sure to mark you calendar for the LSBF convention in April next year. It will be held in New Braunfels on April 11-14. Registration forms and info will be available on the website (www.lsbfcconvention2013.com). Headliners will be Walter Pall, Colin Lewis, and Erik Wigert.

There will be some 'funshops' as well. These are bonsai related topics that will help you improve your skills and well worth taking.

On bonsai basics. Other than buying a good bonsai, there are four steps to getting something to be proud of.

1. Obtaining good raw material: Go on club digs, scour nurseries (you got to really dig there too), look for material from growers.

2. Styling to realize the trees full potential: To learn you must do lots of workshops and participate in round robin discussions. Understand the 'why' as well as the 'what' of styling.

3. Development of the branches: Keep you shears with you when watering, keep after them when they are actively growing, do not let new shoots get long. lots of twigs mean smaller leaves.

4. Maintaining that development: This entails learning to do rejuvenation pruning and proper fertilization.

Of these four I consider the last one the most important. Not maintaining the tree properly is akin to obtaining a masters painting and then letting a two year old use crayons to 'improve' it. It grows out of shape fast.

continued... pg3 (General Minutes)

Becky Drozd **announced** that she has receipt books for each of us to use to give a receipt to anyone, business or individual, who gives raffle items to LSBF (Lone Star Bonsai Federation) for the state convention in April. Because the San Antonio club and we are in charge of the convention, we need to each give 20 raffle items ourselves. The raffle is the primary way that we can make money at the convention in order to have a reserve in the treasury for the next time we are in charge of the convention. Items can be anything related to bonsai, Japan, China, trees, tea sets, etc. She will even take some things that have nothing to do with any of those. LSBF is a 501c3 organization so all donations are tax deductible.

Bill Boytim introduced the program on carving daizas, trays for viewing stones. Jim Trahan, former president of ABS, and aficionado of viewing stones or suiseki, presented a very helpful program regarding the kind of woods that are appropriate, the proper carving of the tray and how to do that. He also talked about the kind of tools to use and methods of finishing the wood.

The raffle was held with several people going home with new items to work on.

Adjournment was at 9:15.

Respectfully submitted,
Nan Jenkins, Secretary

ABS Board Meeting Minutes
November, 2012 Zilker Clubhouse

No meeting held.

Bonsai Notebook

Austin Bonsai Society
P.O. Box 340474
Austin, Texas 78734



The Austin Bonsai Society is a nonprofit organization which exists to help in providing guidance and education for individuals in their desire to learn and expand their knowledge and skill in the arts of bonsai.

The Society holds regular meetings, twelve months a year, on the second Wednesday of each month. Our social period begins at 7:00 PM, followed by our program at 7:30 PM. Normally, unless announced otherwise, these meetings are held in the Zilker Garden Center building, located on Barton Springs Road in Zilker Park, Austin, Texas. We offer a monthly program of interest to the general membership.

The cost of membership is presently only \$30.00 for an individual and \$35.00 for a family membership.

For additional information, please contact the Austin Bonsai Society at P.O. Box 340474, Austin, Texas 78734

Printing provided by

Ranch Road®

A CREATIVE SOLUTIONS CO.

ADDRESS: 8906 Wall Street, Suite 507
Austin, Texas 78754

PHONE: 512 719 9999 FAX: 512 719 9997

WEBSITE: WWW.RANCHROAD.COM

follow us
on facebook