



# Bonsai Notebook

*www.austinbonsaisociety.com*

*A Publication of the Austin Bonsai Society*

*August 2011 vol 8*

## **August 2011 Programs** by Collin Murphy

We have so many great native trees in Texas and many of these trees also make bonsai. Included in that list are the Cedar Elm, Ashe Juniper, Yaupon Holly and others. With an unlimited supply of native trees everyone should have at least a few in their collection.

There are few things as frustrating as spending time digging, getting dirty and caring for a collected tree and then seeing it die. On **Wednesday, August 10th** Mark Bynum will give a presentation on collecting trees. Mark is the president of the Ft Worth Bonsai Society and has personally collected more than 200 trees. Come listen to Mark's tips on collecting trees and your collecting success rate will improve!

Once a collected tree has become established it is time to begin styling. For our member's workshop on **Tuesday, August 16th** Yvonne Padilla will conduct a bring-your-own tree workshop. Space will be limited to 8 participants and the fee will be announced at the August general meeting. Yvonne is the President of the Corpus Christi Bonsai Club and was Chairman of this year's LSBF convention in Corpus Christi. Yvonne specializes in Texas natives and Tropicals.

## Calendar of Events

**August 10th ABS Monthly Meeting Reception**  
Hosts: Valerie Morris and  
Russell Kohlert  
Zilker Garden Center 7:00 pm

**August 10th ABS Monthly Meeting**  
**Collecting Trees- with Mark Bynum**  
Zilker Garden Center 7:00 - 9:00 pm

**August 16th ABS Board Meeting**  
Zilker Garden Center 7:00 - 7:30 pm

**August 16th ABS Member's Workshop**  
**Workshop - Bring-Your-Own Tree**  
with Yvonne Padilla  
Zilker Garden Center 7:30 - 9:00 pm



**Tool Sharpening**  
**at our July 2011 Meeting**  
*(Photo of Joey McCoy)*

## **Austin Bonsai Society Board of Directors**

**Mike Watson**  
President

**Collin Murphy**  
Vice President

**Nan Jenkins**  
Secretary

**Pat Ware**  
Treasurer

**Becki Drozd**  
Member at-Large

**Timmi Kuykendall**  
Member at-Large

**John Muller**  
Member at-Large

**Joey McCoy**  
Former President

The rate of advertising in "Bonsai Notebook" is \$6.00 per month or \$35.00 per year, for two column inches minimum. Additional space must be purchased in increments of two column inches. Two column inches measure approximately 3 1/2 inches wide by 2 inches high. All ads must be camera ready and prepaid. Changes to ads must be received 30 days prior to the month of the desired insertions. Other newsletter content is due on the last day of the month, in order to be published in the next month's newsletter.

John Muller is the editor of "Bonsai Notebook". He may be contacted at [jcm2austx@sprintmail.com](mailto:jcm2austx@sprintmail.com).

## **Austin Bonsai on the Internet**

Online discussions  
Picture and video sharing  
Questions and answers  
Upcoming events  
*NO SPAM*

<http://groups.yahoo.com/group/austinbonsai/>  
or  
[jvmccoy@sbcglobal.net](mailto:jvmccoy@sbcglobal.net).

As I am writing this, there is a tropical storm brewing in the gulf. I am hoping and praying that it becomes a hurricane and sends some rain and cooler temperatures up this way. But, I grew up in central Texas and have seen storms evaporate literally a few miles from my house! In last month's newsletter I talked about the uncommon heat. I hate to harp on it further but I am seeing some drastic effects on both my bonsai and my landscape trees. It's downright scary!

I also mentioned previously that some trees will slow down to a crawl and even go into a type of sleep. A couple of species have scared me in the past by playing possum and dropping all of their leaves. The relieved me by soon putting out a new set of leaves that persisted until fall and seem to do this every summer. If you have a tree that you think has died, don't throw it away immediately! Nine times out of ten it probably has bit the dust but it doesn't hurt to give it a chance. Most of all, don't start drowning it in water! Really check that soil and don't water until absolutely needed. And above ALL else... stay cool!



*Suiseki at State Convention  
(Photo by Joey McCoy)*

## **ABS May General Meeting Minutes**

**July 13, 2011**

**By Nan Jenkins, Secretary**

President Mike Watson called the meeting to order at 7:32.

Mike thanked Bill Boytin and Deb Van Cleaf for the excellent refreshments. He also introduced our new member, Gerritt

### **ANNOUNCEMENTS**

Pat Ware announced that the Lone Star Bonsai Federation state convention will be held April 11-13, 2013 at the New Braunfels Convention Center. We need to be saving things for the many raffles, planning what trees we might put in the exhibit at the convention, thinking about what master bonsai artists we want to invite to do workshops, and any other suggestions anyone might have. Everyone who is willing and able is invited to join in the process of preparing for the convention, which we are in charge of with San Antonio helping us.

### **PROGRAM**

Colin Murphy introduced the program. Joey McCoy gave a very helpful and informative demonstration on details of how to sharpen tools and keep them in good shape.

All raffle items for the evening were given away. And the meeting adjourned at 9:00.

Respectfully submitted,  
Nan Jenkins

## **MBP Bonsai Studio**

**Importers, Retail & Wholesale**

**Your source for:**

**High quality Yagimitsu & Ryukoh tools**

**Organic Bonsai Fertilizers**

**Imported and Domestic Trees**

**Bonsai Pottery, Soils and supplies**

**Classes & Seminars**

**Open Tuesday Through Sunday**



ph: 512-989-5831

e-mail: [mbpbonsai@suddenlink.net](mailto:mbpbonsai@suddenlink.net)

601 Kay Lane

Pflugerville, TX 78660

(call for directions)

LSBF (Lone Star Bonsai Federation), of which all members of the Austin Bonsai Society are members, has a website which might help members understand the organization better.

Please go to: <http://www.bonsai-lsbf.com>

## **JADE GARDENS**

HOME OF



Chuck & Pat Ware

Owners

Visa & MasterCard

e-mail: [bonsaijg@gmail.com](mailto:bonsaijg@gmail.com)

web page: <http://www.bonsaiexhibittexas.com>

12404 Ranch Road 12

Wimberley, TX 78676

(512) 847-2514

## **Bonsai Calendar**

- On Sunday, October 2, 2011 the LSBF visiting artist will be Erik Wigert. Following a demo there will be a bring-your-own-tree workshop.
- The 2012 state LSBF convention is in Dallas on April 27 - 29, 2012.
- The 2013 state LSBF convention will be April 11-13, 2013, at the New Braunfels Convention Center.

*Know of an upcoming Bonsai event of interest to club members? Send the details to [jcm2austx@sprintmail.com](mailto:jcm2austx@sprintmail.com)*



## It's CONVENTION time again!!

Hello Bonsai friends.. as the Chair of the 2013 combined Austin-San Antonio convention, I am excited to start planning this shindig. Kevin Preston (as co-Chair) and I will be working closely with volunteers from both clubs to put on workshops, exhibit, raffles and more for the entire state to enjoy. **Please save the date of Sept. 11th at 1pm at Jade Gardens in Wimberley** as our first meeting and please plan to join. After all, conventions are only as good as our volunteers. Let's help to make this one of the best!

-Joey McCoy

**Where:**  
**Jade Gardens**  
**12404 Ranch Road 12**  
**Wimberley, TX 78676**  
**Sept. 11, 2011**  
**1:00 pm**

---

### Tool Sharpening at the July 2011 General Meeting



*(Photos by Joey McCoy)*



## Tool Tips from Sharpening Demo

### Sharpening equipment

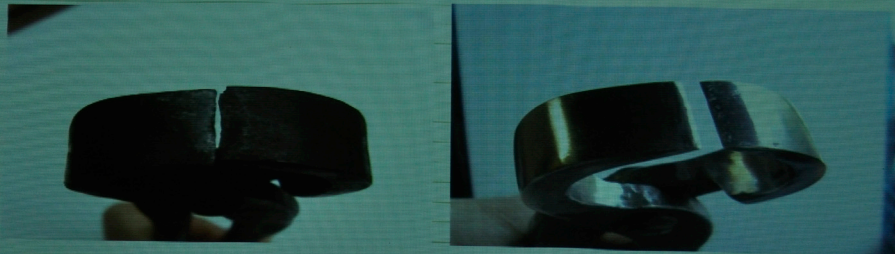
Sharp tools last longer than dull ones. Less work required to do the same job.

Some items needed:

- Whet Stones (coarse: 600-900 grit, fine: 1200-1600 grit) soak stones 24hrs before first use and at about 20 minutes before use thereafter.
- Dremel or flex-shaft tool with bits: flat grinding stone, cone shaped grinding stone, rubber polishing point.
- Magnifying loop or headset loop (hands free)

### Root cutter

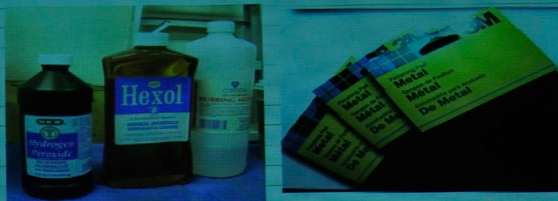
Even badly damaged tools can be restored:



The same tool before and after

### Maintaining your tools

- Disinfect tools occasionally.
- Remove sap & stains with a scotchbrite pad and oil.
- Use Sand Flex blocks or sandpaper to remove stains and rust.
- Naval Jelly or Corrosion X removes extensive rust build up.



(Photos by Joey McCoy)

## August Bonsai by John Miller

*Editor's Note: John Miller, who writes a monthly column for the Bonsai Society of Dallas and the Fort Worth Bonsai Society, has agreed to share his column with us. We need to make adjustments for our warmer, climate, with its early springs, long summers, late falls and erratic winters.*

Would you like to see an article on styling nursery type material like some that you can actually obtain yourself in a nursery instead of some fantastic collected mountain yamadori. Try locating some articles by Tedy Boy of Indonesia. Three are in Bonsai & Stone Appreciation Magazine: Vol 48 No 1 J-F-M 2009 Vol 48 No 3 J-A-S 2009 and possibly the best is the latest issue Vol 50 No 3 J-A-S 2011. You may be able to see them on the website [www.bonsai-bci.com](http://www.bonsai-bci.com).

Although you have only two main jobs in August [keeping your bonsai alive and keeping them healthy] you have some other things to consider and/or play with.

Azaleas set their buds in July. Other spring flowering plants also set buds in the fall. These should not be pruned after bud set if you desire the blooms next spring. If you are in a developmental stage you can still prune them achieving a faster development at the expense of next years flowers. Other flowering plants should have the dead blooms and seed pods removed. That may encourage more flowering. Some tropicals like the bougainvillea flower after a dry period which is their natural dormancy. Check growth habits for your species.

Repot heat loving tropicals. Feed well a few days before repotting. Also be sure to mist the roots while working on them. After repotting, keep out of the sun and wind until they show signs of recovery.

Good fertilizer techniques will help you maintain healthy bonsai. The best technique is to use organic fertilizer balls on the surface. They will supply a very low dose of nutrients every time you water. Coarse organic powders like Hollytone from Espoma may be worked in the top of the soil would be next best. Time release fertilizers will work but you do not have much control of it, it releases a lot when you first put it on

and you can not tell when it peters out. Water soluble fertilizers are concentrated chemicals that may be too active for high temp use. They also quickly wash out of the soil as you water and you are doing that more often now. Check to see that your fertilizer supplies the many micronutrients that plants need.

Regardless of where you live in Texas you can expect 90+ temperatures and the direct sun will be merciless. The sun on the pots raises the temperature of the soil high enough to kill the roots. It also speeds up the drying of the soil. Many pathogens (e.g. spider mites) thrive in higher temperatures and the stressed plants cannot cope with added problems.

Two things can be done to cope with the sun. You can supply partial shade and you may provide a cover over the pots. The shade, whether from a natural source (tree cover) or a shade cloth material, should provide greater protection from the afternoon sun. Late afternoon sun can be a problem because the temperature is highest and the soil is usually drier at that time. A loose cover over the pot should not touch the pot. A non-porous cover may create an oven. There should be good air flow around the pot for cooling.

How often you need to water depends on your trees, your location and your soil mix. Some may need 2 or 3 waterings while some next to them get by with one. An automatic drip system could buy you some help but you should hand water at least once a day to be sure that each and every pot gets fully wet.

Ideally watering should be done at 2pm or so. That would lower the soil temp to around 70 and would provide for some evaporative cooling the rest of the afternoon.

During these extremely hot periods take care when using chemicals. This is true whether you are using organic chemicals or the other kind. I do not use my organic spray unless it can have a few hours before the temp reaches 90. Heat makes chemicals more active and they can damage your plants. Be sure to read the fine print on the label re temperature use. You may need to use them early in the morning or very late evening. Most commercial chemicals are



sold in an oil based mixture which can damage some plants like buttonwood at any temperature.

When checking the results on your plants after spraying remember that the spray usually will not remove the 'evidence' of problems. The webs will still be there after the mites are killed, the shells of the scale will be attached to the leaf or stem. These will have to be removed by hand, by a jet of water, or some other way. A soft toothbrush works good on the scale shells.

Check your trees for moss growing on trunks. Bark seems to hold moisture pretty good and the extra watering may cause moss to grow. Kill it with 90% isopropyl alcohol. Let it die before picking off gently with tweezers. Too much moss on the soil interferes with proper watering.

Also watch for signs of insect problems. The spider mite will always be near. Others to look for are scale of various forms, aphids, and mealy bugs. Preventative medicine is best. By the time you see signs, the damage is already done, especially spider mites. I use the organic foliar feed (1 Tablespoon each of fish emulsion, liquid kelp, molasses and 5% apple cider vinegar per gallon water) to control all these. You can use some of the other organic controls or a chemical according to label directions. Read the label directions carefully. Do not apply oil based chemicals to buttonwoods or other sensitive species. A hose end sprayer does not work very well, its droplets are too large and you have little control over where it goes. Use a pump sprayer with a fine spray and cover both top and bottom of leaves

The humidity in summer varies quite a bit but when it sticks around for a few days look for fungal problems to appear, mildew being the most prevalent. Foliage spraying in the morning will usually not be a problem because it dries pretty quickly. Treat with potassium carbonate which you can find at any nursery with a decent organic section. There are several chemical sprays available too.

## **ABS May Board Meeting Minutes**

July 19, 2011

Present: Nan Jenkins, Timmi Kuykendall, Joey McCoy, John Muller, Collin Murphy, Pat Ware, Mike Watson.

Call to Order: 7:10

The minutes for May were approved as published in the newsletter.

Treasurer's Report: The books show that we spent more than we brought in for the month because we paid the deposit (\$2,117.38) on the convention center in New Braunfels for the 2013 LSBF convention. That money will be returned to us by LSBF. The net profit we realized on the ABS annual exhibit was \$376.43.

Old Business: The 2013 LSBF Convention  
Pat Ware was at the recent San Antonio Bonsai Club meeting where she told them the same things she told us at our meeting. They are on board with the combined convention and are looking at possible trees for the workshops. The board had an extended conversation concerning the convention chairperson, what artists to invite, and what kinds of trees we might like to use. Pat moved that Joey McCoy be elected chairperson, Timmi Kuykendall seconded, and the board passed the nomination. Next step is for Joey to call a meeting of both clubs. Everyone who is interested in helping with the convention planning is invited to attend. Nan has list of all the committees that were used for the last convention that we planned and she will send out a list of those to the board.

Pat announced that she has resigned as treasurer of LSBF as of the end of the year.

Motion to adjourn was passed. Adjourned at 8:05

Respectfully submitted,  
Nan Jenkins, Secretary

# Bonsai Notebook

Austin Bonsai Society  
P.O. Box 340474  
Austin, Texas 78734



The Austin Bonsai Society is a nonprofit organization which exists to help in providing guidance and education for individuals in their desire to learn and expand their knowledge and skill in the arts of bonsai.

The Society holds regular meetings, twelve months a year, on the second Wednesday of each month. Our social period begins at 7:00 PM, followed by our program at 7:30 PM. Normally, unless announced otherwise, these meetings are held in the Zilker Garden Center building, located on Barton Springs Road in Zilker Park, Austin, Texas. We offer a monthly program of interest to the general membership.

The cost of membership is presently only \$30.00 for an individual and \$35.00 for a family membership.

For additional information, please contact the Austin Bonsai Society at P.O. Box 340474, Austin, Texas 78734

